



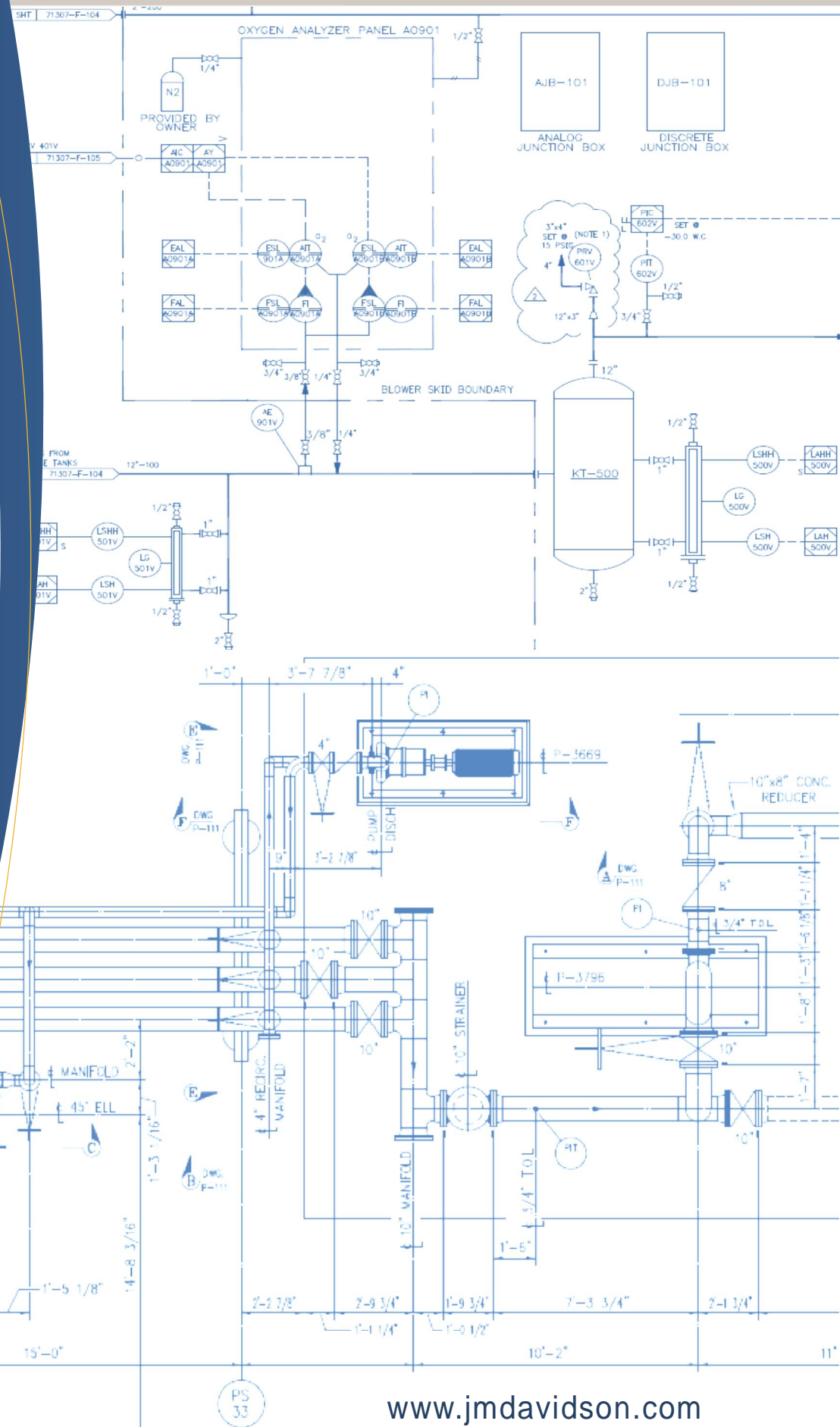
J.M. Davidson Inc.

www.jmdavidson.com

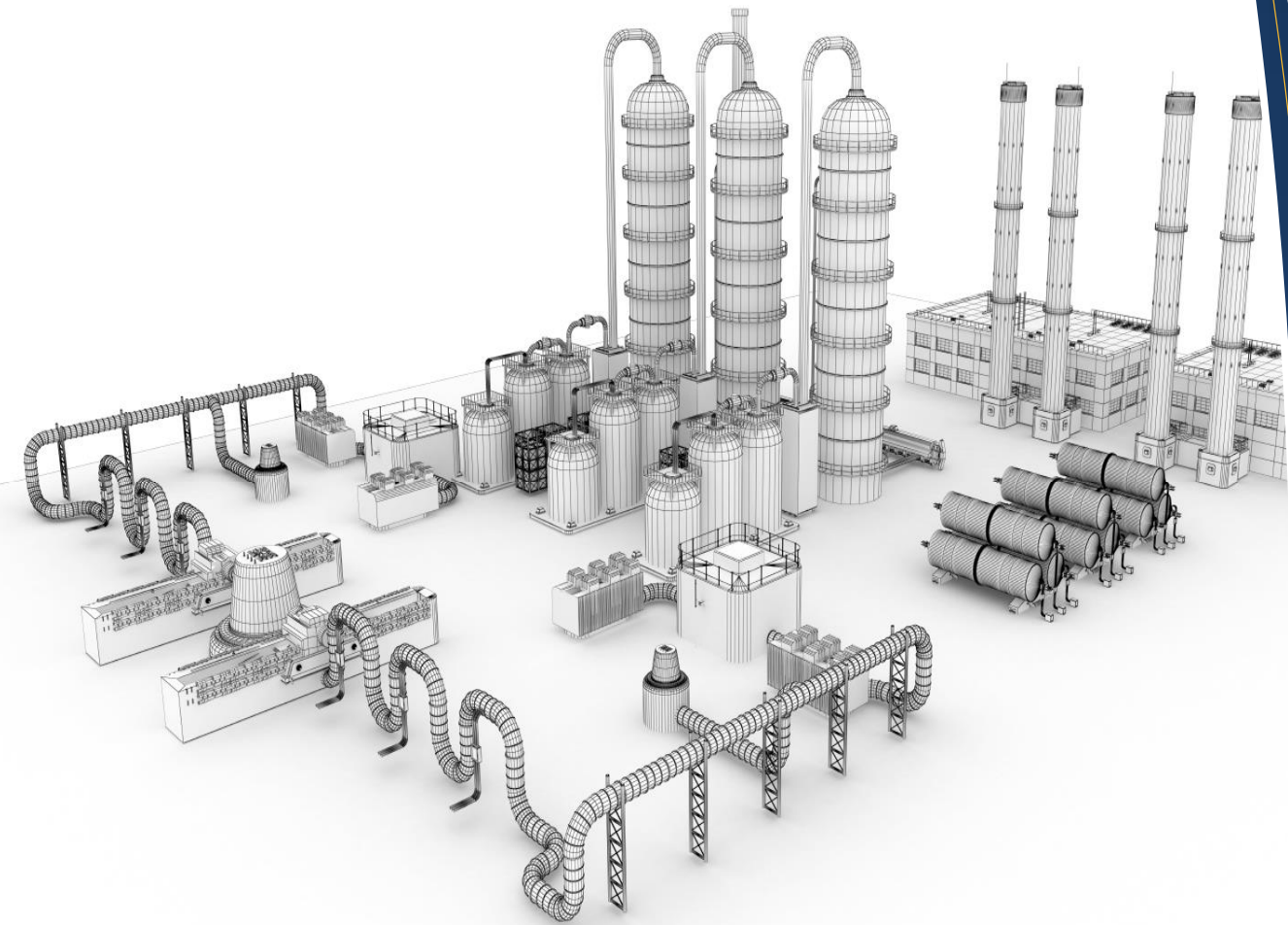
P.O. Box 4639
Corpus Christi, TX 78469

Aransas Pass
2564 CR 1960
Aransas Pass, TX 78336
361.883.0983 Office
361.758.5390 Fax

Pearland
4801 W. Orange St.
Pearland, TX 77571
361.758.3447 Office



www.jmdavidson.com



INDUSTRIAL CONSTRUCTION MANAGEMENT

From Site Work to Start Up

J.M. Davidson, Inc. at work for you.

Our unique structure and diverse abilities allow us to manage a wide range of projects within our industry. Since 1982, we have developed and maintained an excellent reputation for our manpower, responsiveness, and managerial coordination skills. Our strengths have resulted in successful completion of large complex projects from design build to conventional contracts.

J. M. Davidson is structured to directly hire and manage 90% of our project labor force. Our subcontractors we utilize are made up of a history of knowledge and trust on past projects so we are in control of our budget and our schedule.



INDUSTRIAL CONSTRUCTION MANAGEMENT

STRATEGIC SERVICES

Sandblasting & Painting
Pile Driving & Pier Installation
Control Panel Fab & Programming
Boiler & Pressure Vessel Repair
Project Planning & Consulting
Shallow Marine Pipeline Construction
Electrical Substation Installation
SIGNATURE CAPITAL PROJECTS
Galveston Bay Bio-Diesel Refinery
Off Shore Platforms Fabrication
Gas Insulated Substation Construction
Truck Unloading Terminals

Custom Industrial Services for your Construction Needs

QUALITY ASSURANCE

J.M. Davidson is an A.S.M.E. Coded Fabrication Facility. J. M. Davidson maintains a set of strict quality processes and prides itself as a company for producing products of the highest quality found in our industry. The company's Quality Assurance Manual maintains set procedures for all key business processes, including monitoring processes to ensure they are effective, keeping adequate records, checking output for defects, regularly reviewing individual processes for effectiveness, and facilitating continual improvement.

SAFETY

J. M. Davidson is dedicated to safe project execution. Our Safety Culture is based on knowledge, skill, and an attitude of care and concern. It is our duty to provide our employees with experienced supervision, effective training, and safe equipment. The success of our Safety Program is based on our commitment to recognize and eliminate all potential hazards to you, your property, our employees and our community.

SINCE 1982, we have **DEVELOPED TO PERFORM ...Industrial**

Construction Projects from **"SITE WORK TO START UP"** including: **CIVIL, STRUCTURAL, MECHANICAL, ELECTRICAL & MARINE** installations.

CONNECTING YOU

WITH OUR **EXPERIENCE,**
KNOWLEDGE, AND RESOURCES.

We provide our Industrial Customers the ability to perform turnkey construction solutions in which our project team manages our labor force on projects from 5 to 200 people, up to 50 million dollar projects. J.M. Davidson provides industrial construction services for Ingleside on the Bay,

Port of Corpus Christi, Houston Ship Channel, Rio Grande Valley, Major Gulf Coast Ports, and Power Generation firms in Oklahoma, Texas, and Louisiana. We proudly manage Industrial Construction Projects from site work to start up including: Civil, Structural, Sandblasting & Painting, Process Equipment, Electrical

Substations, Steel, Fabrication, ASME Code Fabrication, Marine Construction, and Instrument and Electrical work.

"...STRUCTURED to DIRECTLY HIRE and manage 90% of our project LABOR FORCE."

TOTAL QUALITY AND TEAM MANAGEMENT

J.M.Davidson offers an excellent advantage especially in a tighter market, lower cost with equivalent, higher quality than other construction firms. We will continue to prove that our quality in management and work will outperform our competitors, especially **big+** functional management approaches to construction. We represent a close-knit team of construction managers who know what to expect from each member of the team.



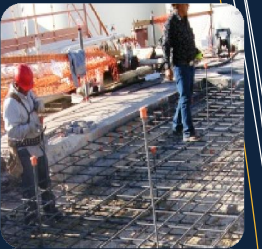
We focus on new ideas that never stray from old fashioned experience. The Total Quality, Team Management approach assumes that quality construction is more than just pouring concrete, welding, or pulling cable, it includes each step of the construction process from design development, to purchasing, management, and construction.

This focus enables the Davidson Construction Team to achieve what the customer needs i.e. your goals are our goals. We understand our industry is very sensitive to repeat customers and references. Therefore, we believe that without customer satisfaction at every step of the construction process then that particular project risks not being a success. This approach helps us avoid risks and gain successful projects from site work to start up.



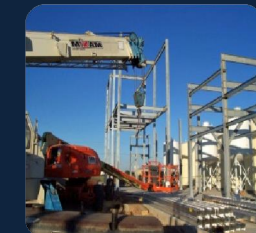
CIVIL

Excavation
Site Work
Drill Piers
Concrete Foundations



STRUCTURAL

Steel Fabrication
Pile Driving
Steel Erection
Structural Concrete



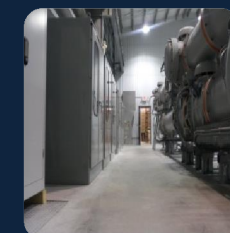
MECHANICAL

Process Installations
Pipe Fabrication
ASME Code Fabrication
Pressure Vessel
Heat Exchangers
Process Equipment
Service



ELECTRICAL

Instrumentation
Control Panel Fabrication
Substation Utility
Construction



MARINE

Marine Structural/Piping
Fabrication and Installations
Dock Repairs
Offshore Fabrication and
Equipment Installations

